



Rangi Ruru  
Girls' School

# Level 1 Art

## 2022



Arwen van Pallandt – Excellence Level 1 Visual Art

### **Whāia te iti kahurangi ki te tūohu koe me he maunga teitei**

*Seek the treasure you value most dearly: if you bow your head, let it be to a lofty mountain*

This whakatauki is about aiming high or for what is truly valuable, but it's real message is to be persistent and don't let obstacles stop you from reaching your goals. As a faculty we have high expectations and will encourage you to have belief in your own ability.

[Course Outline and Assessment](#)

Learning	Achievement standard Number	Title	Credits	Assessment Mode
<p>You will develop an individual body of work based on a personalised programme. You will be taught the practical and thinking skills needed to produce a portfolio of artwork that sequentially develops.</p> <p>You will learn to critique your own work in order to generate and extend ideas. You will become independent thinkers and confident in your own decision making.</p>	<p>1.2 AS90914 Version 3</p>	<p>Use drawing methods and skills for recording information using wet and dry media</p>	4	<p><b>Internal</b></p> <p>Technical skills</p> <p>Monday 27th June 4.00pm, (Formative Assessment)</p> <p>Monday 12th Sept 4.00pm (Summative Assessment)</p>
	<p>1.4 AS90916 Version 3</p>	<p>Produce a body of work informed by established practice, which develops ideas, using a range of media</p>	12	<p><b>External</b></p> <p>Two panel portfolio showing development and technical skill</p> <p>Thursday 20th October 4.00pm</p>

## WHO IS THE BOSS?

Kei a koe te tikanga! *You're the boss!*

The Visual Art Faculty support you to develop your thinking and questioning skills alongside practical skills in art making. Our goal is for you to become an independent learner, confident in your own decision making. In this course we support you develop your own individual programme by establishing habits where you regularly reflect on your learning, plan your next step and develop set weekly individual goals/contract during a one-on-one critique with your teacher. We create an environment where you learn from others through discussion, class critiques, and working collaboratively. Staff will facilitate your learning through in-depth questioning to support you to reach your full potential. We focus on challenging and extending your cognitive skills and technical ability. You will be encouraged to take risks in your artmaking, to embrace failures and see them as opportunities to problem solve. You will develop strong time management skills. In the Visual Art Faculty

staff will work with you to develop a personalised programme and provide deep learning opportunities based on your strengths, ideas and stylistic interests. You will be inspired, challenged and empowered!

### Staff

Our Visual Art faculty are a passionate team who work collaboratively to support you. Year 11 Art teachers are Ms Sheehy and Ms Rivers. The Visual Art Department operates in a learning environment that is open, therefore you may also have input from anyone one of the other Visual Art specialist teachers including Mr Mogridge and Ms Macleod. We foster collaboration between areas.

### Health and Safety

You are required to read our Code of Conduct and watch Health and Safety demonstrations, then sign our register/eForm to ensure you are familiar with and agree to our systems and policies in Visual Arts.

### Materials

A kit of art materials required for the year is ordered for you from Gordon Harris and charged to your account in February. By ordering in bulk, we obtain a reduced price and less packaging. Having all goods delivered directly to the Art Department also helps keep down our Rangi carbon footprint. The cost of materials including the kit and oil paints is estimated between \$170-\$190. We encourage you to reuse materials from previous years. Each term there will be a fee for newsprint and solvents. Individual charges for paper, plates, folio board, ink and spray glue will be recorded and put on your school account.

### Caring for the Environment

Please ensure you always show respect to others and the environment in the art block. Keep an eye out for posters to help with source separation and reduction of waste as well as our environmentally conscious systems for the reuse and disposal of chemicals.

### After Hours Policy

In Year 11 you may use the art rooms between 7.30am - 5pm on school days. You are welcome to work in the rooms during the lunch hour.

### Device Use

Please refer to the Visual Arts Device Use Policy. This has been put in place to help manage your output in this subject. In Year 11 Art, you will rarely need your computer, but may use phones for photographs at times only when directed by the teacher. During class we do not allow the use of headphones. This allows you to hear all learning conversations.

### Critiques

These are crucial to learning in this subject. Discussing your learning and that of others is an integral component of this course.

### Learning Progress Interviews

Please take your parents/guardian to the Art Department to show them your work prior to your interviews. They are welcome to come in and see your progress throughout the year.

### Independent Learning

We will support and encourage you to develop sound work habits in this subject. If you work slowly, you will be helped with strategies to speed up the process. Any incomplete tasks should be completed outside of class. Regular feedback, discussions and checks with teachers will ensure your progress is closely monitored and you keep up to date. You will always have something to work on! We encourage you to complete practical work at school. We suggest you spend one hour or two half hour sessions a week throughout the year on Art outside of class to meet Level 1 requirements. This will help your wellbeing and ensure there is no rushed, last-minute panic in October! Once your portfolio is submitted early in Term 4, you will have the opportunity to complete an Art History standard or study during Art periods.

### Extension Process

Dates for external submissions are set by NZQA and there is no possibility for extension. Application for internal assessment extensions can be made after discussion with your teacher who will then contact the Head of Faculty. Any application for extension must be submitted on the appropriate form and be accompanied by a letter from your parents. Where possible we try to find a solution to ensure you meet the required deadline, as an extension often impacts on further learning.

### Assessment

Learning will be checked off to ensure you are up-to-date during the first lesson of Week A. This gives you two weeks to complete any unfinished work. Your teacher will help design assessment specific to your needs and goals, especially if you are going to miss part of the course due to other commitments. Philosophically we believe in focusing on learning not assessment. At times you will be undertaking learning that will not be assessed, however it will inform your artmaking. Decisions about which standards to enter will be finalised by the end of July. NCEA allows a 'pick and mix' approach. Rangi allows maximum of 18 credits per subject in Level 1.

### Credits from Year 10 Artist Book

Credits from AS90916 gained in 2021 will appear on your record this year. These can contribute towards Level 1 Endorsement, but not Subject Endorsement.

### Submissions

Folios are assessed by four art specialists and seven are sent for moderation. You will hear about your external results in January next year. Your portfolio is to be collected from the Art Department at the end of March 2023.

### One Day Art Display

Your portfolio will be exhibited in our One Day Art Display. Please invite you family and friends!

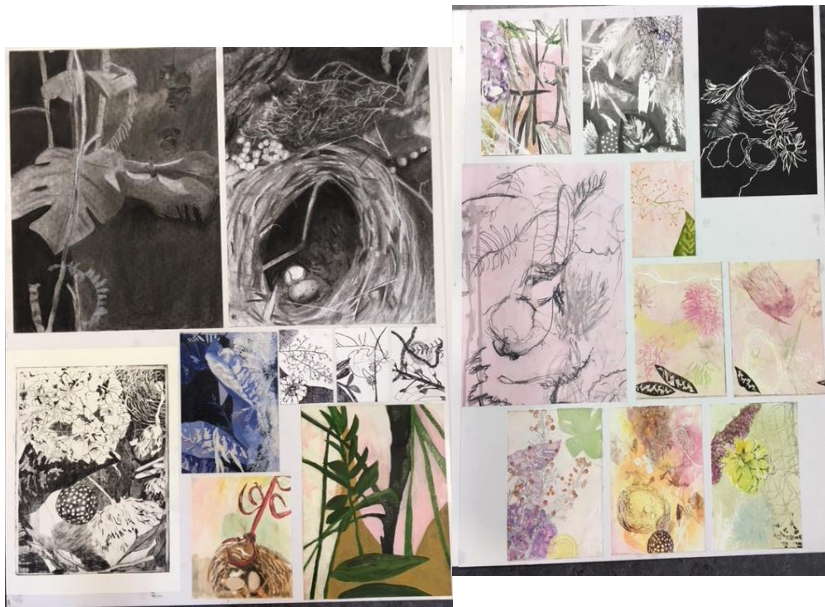
Exhibition: **Tuesday 1<sup>st</sup> November, 8.00am-4.00pm**

***'Creativity takes Courage'***

Henri Matisse



Rosetta Brown – Excellence, Level 1 Visual Art



Niamh Kilpatrick – Excellence Level 1 Visual Art