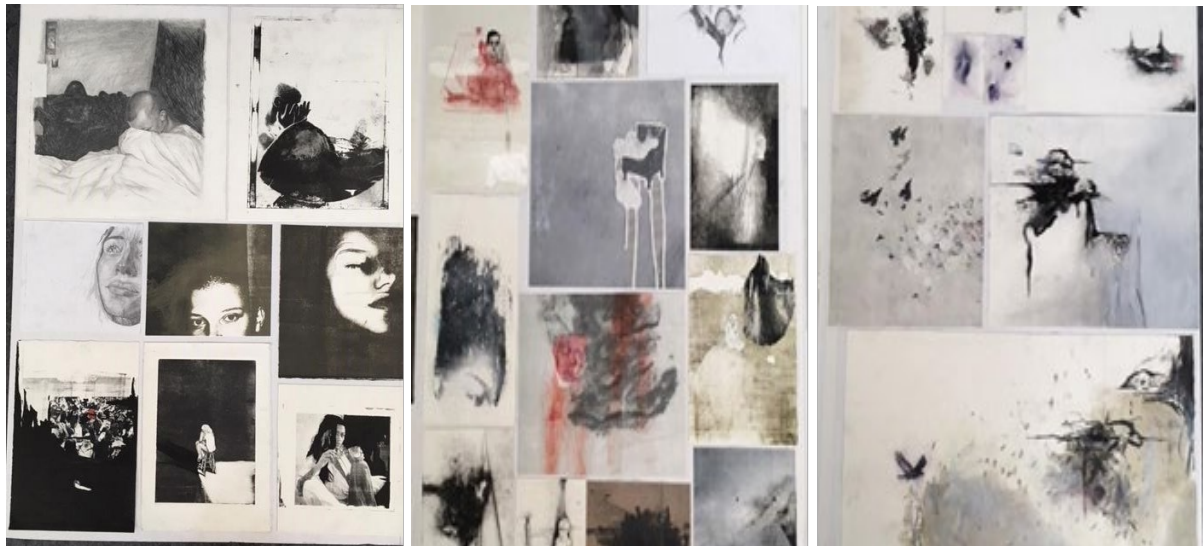




Rangi Ruru
Girls' School

Level 3 Printmaking - Perehitanga 2023



Charlotte Bowman Outstanding Scholarship and Top Scholar

Nau mai - Welcome to Level 3 Printmaking - Perehitanga

BE YOUR BEST!

Whāia te iti kahurangi ki te tūohu koe me he maunga teitei

Seek the treasure you value most dearly; if you bow your head, let it be to a lofty mountain

This whakatauki is about aiming high or for what is truly valuable, but its real message is to be persistent and don't let obstacles stop you from reaching your goals. As a faculty we have high expectations and will encourage you to have belief in your own ability.

Course Outline and Assessment

Learning	Achievement standard Number	Title	Credits	Assessment Mode
<p>You will work independently to establish a proposition, explore and investigate this visually, then develop, extend and resolve this. A folio showing sequential development of their work is submitted for assessment. Working through art-making procedures and processes including drawing and wet media, students develop an understanding of printmaking and apply this to the production of a body of work.</p> <p>You are required to look at a range of art works from established printmaking practice (including contemporary and traditional) to inform, challenge and influence their own ideas and artmaking.</p>	<p>3.2 AS91448 Version 2</p>	<p>Use drawing to demonstrate understanding of conventions appropriate to printmaking.</p>	4	<p>Internal</p> <p>Technical skills</p> <p>Formative: Thursday 27 June 4.00pm</p> <p>Due: Monday 9 September 4.00pm (Summative)</p>
	<p>3.3 AS91453 Version 2</p>	<p>Systematically clarify ideas using drawing informed by established printmaking practice.</p>	4	<p>Internal</p> <p>Development of ideas</p> <p>Formative: Monday 9 September 4.00pm</p> <p>Due: Thursday 17 October 4.00pm (Summative)</p>
	<p>3.4 AS91458 Version 2</p>	<p>Produce a systematic body of work that integrates conventions and regenerates ideas within printmaking practice.</p>	14	<p>External</p> <p>Three panel portfolio showing development and technical skills</p> <p>Due: Friday 25 October 4.00pm</p>

'Creativity takes Courage'

Henri Matisse

BE YOU!

You will be supported to develop your individual strengths and interests.

WHO IS THE BOSS?

Kei a koe te tikanga! *You're the boss!*

The Visual Art Faculty support you to *be you*, to follow your own interests and to develop your thinking and questioning skills alongside practical skills in art making. Our goal is for you to become a well-rounded, reflective, independent learner, confident in your own decision making and with a strong sense of self-belief. In this course we help you develop your own individual programme by establishing habits where you regularly reflect on your learning, plan your next step and develop set weekly individual goals/contract during a one-on-one critique with your teacher. We create an environment where you learn from others through discussion, class critiques, and working collaboratively. Staff will facilitate your learning through in-depth questioning to support you to reach your full potential. We focus on challenging and extending your cognitive skills and technical ability. You will be encouraged to take risks in your artmaking, to embrace failures and see them as opportunities to problem solve. You will develop strong self-management skills. In the Visual Art Faculty your teacher and other staff work with you to develop an individual programme and provide deep learning opportunities based on your strengths, ideas and stylistic interests. You will be inspired, challenged and empowered!

Staff

Our Visual Art faculty are a passionate and positive team who work collaboratively to support you. Your specialist printmaking teacher is Ms Rivers. The Visual Art Department operates in a learning environment that is open, therefore you will also have input from anyone one of the other Visual Art teachers including Mr Mogridge (Design/Printmaking), Ms Sheehy (Painting), Ms Macleod (Photography/Sculpture). We foster collaboration between areas. All Visual Art staff are working on their own inquiry-based learning.

Health and Safety

You are required to read and sign our Health and Safety document, and watch demonstrations, to ensure you are familiar with, and agree to, our systems and policies in Visual Arts. As the rooms are workshop studios, earphones are not permitted.

Materials and Charges

A kit of art materials required for the year is ordered for you from Gordon Harris and charged to your account in February. By ordering in bulk, we obtain a reduced price and less packaging and courier fees. Having all goods delivered directly to the Art Department also helps keep down our Rangi carbon footprint. Level 3 Printmaking kits are \$----. We encourage you to also reuse materials from previous years. Each term there will be a fee for inks, newsprint and solvents. Individual charges for printmaking paper, folio board and courier will be recorded and put on your school account.

BE THE CHANGE!

Caring for the Environment

Please ensure you always show respect to others and the environment. Keep an eye out for posters to help with source separation and reduction of waste as well as our environmentally conscious systems for the reuse and disposal of chemicals.

After Hours Work

As a senior student you may use the Art Department rooms during daylight hours between 8.00am – 5pm Monday to Friday. You are welcome to work in the rooms during the lunch hour and in study periods, providing you tidy up after yourself! Make sure you do not work alone and inform whānau if you are staying at school. All expectations are outlined in our After-Hours Policy on Teams.

Device Use

Please refer to the Visual Arts Device Use Policy. This has been put in place to help focus on output in this subject. You are not permitted to use your phone or headphones during class. If you need to use the camera on your phone, please seek permission from your teacher.

Critiques

These are crucial to learning in this subject. Discussing your learning and that of others, communicating clearly and sharing ideas is an integral component of this course. This is how we learn in this faculty. In Year 13 you will have one critique per week on a set day. Please ensure you write up your next goals/contract and complete reflection in your critique book prior to your weekly meeting.

Learning Progress Interviews

Please take your parents/guardian to the Art Department to show them your work prior to your interviews. They are welcome to come in and see your progress throughout the year.

Check-In Home

Once a term, senior students are asked to send an image of your most successful recent work and information outlining your next learning goals in this subject, to parents/guardian.

Independent Learning Outside of Class

We will support and encourage you to develop sound learning habits in this subject. If you work slowly you will be helped with strategies to speed up the process. Any incomplete tasks should be completed outside of class. Regular feedback, discussions and checks with teachers will ensure your progress is closely monitored and you keep up to date. You will always have something to work on! We encourage you to complete all practical learning at school and use your time at home for research. We suggest you spend one hour a week on this subject in your own time to meet Level 3 requirements. This will help your wellbeing and ensuring there is no rushed, last minute panic in October!

Extension Process

Dates for external submissions are set by NZQA and there is no possibility for extension. Application for internal assessment extensions can be made after discussion with your teacher who will then contact the Head of Faculty. Any application for extension must be

submitted on the appropriate form and be accompanied by a letter from your parents. Where possible we try to find a solution to ensure you meet the required deadline, as an extension often impacts on further learning.

Assessment Outcomes

Your teacher will help design a course specific to your interests, needs and goals. Philosophically we believe in focusing on learning not assessment. At times you will be undertaking learning that will not be assessed, however it will inform your artmaking. NCEA allows a 'pick and mix' approach. This course is designed to provide the opportunity to complete 3 Visual Arts Achievement Standards for a total of 22 Level 3 credits, however further standards are available as extension opportunities and can be negotiated.

Scholarship

You are encouraged to enter the scholarship exam in this subject. Rangī Ruru Visual Arts students have consistently gained scholarships every year since NCEA began. Our students have also been awarded Outstanding Scholarships and Top Scholar in Visual Arts. We feel confident our students have the thinking, practical, communication and analytical skills required for the Scholarship exam. A thorough workbook containing research, written notes and analysis, critique reflections and visual notes should be maintained throughout the year. This learning will form the backbone of your eight A3 scholarship pages. Please ensure you are available from **10am-2pm on Thursday 31 October or Friday 1 November** to compile your workbook submission for this subject and other Visual Art subjects. Staff will discuss requirements and supervise these sessions. Scholarship workbooks are due **Monday 4 November before 11am**. Submissions received after this will fail to meet NZQA's courier deadline.

Sending NCEA and Scholarship Submissions

Staff will package and courier your portfolio and scholarship submission to Wellington for you. These will be returned from NZQA to your home address in December.

Trips

Learning opportunities outside of the classroom include a trip to the Sydney Biennale and Vivid Light Festival from Friday 31 May – Sunday 3 June (Saturday and Sunday of Kings Birthday weekend). We will also go on a trip to the Top Art Exhibition, and may go on gallery visits and trips to local tertiary institutions. Visiting exhibitions helps you become inquisitive and develop curiosity. We encourage you to see shows at local galleries in your own time and to read reviews to deepen understanding of different approaches and cultural contexts around making art. This year the Printmaking festival Printopia is on in Auckland Friday 3 – Sunday 5 May.

Tertiary Submissions

As Fine Arts, Design, Architecture, Film/Animation and Fashion tertiary courses select applicants from specific portfolio submissions prior to NCEA Level 3 and University Entrance results, it is crucial your portfolios (12-24 pages) showcase your strengths and show your understanding of how to develop ideas both conceptually and pictorially. We have worked on these applications with students for many years and regularly communicate with institutions to ensure we know exactly what they are looking for. Our students have a great

success rate at being offered a place in limited entry tertiary courses. Some institutions require applications by the start of October. Please make an appointment with staff to discuss any support you require regarding tertiary portfolio submissions. There will be group sessions arranged for those applying for Massey University (Wellington), Ara (Christchurch), Elam (Auckland University School of Fine Arts), Ilam (Canterbury University School of Fine Arts) and RMIT (Melbourne) if required. Our school Pathways and Careers Strategist will support you with all other aspects of tertiary and Halls of Residence applications.

Leadership in Visual Art

Senior students have an opportunity to mentor and teach others as Head of Art Club or Photography Club, to showcase and celebrate Visual Arts successes as Head of Visual Art, or to play an active role in organising exhibitions and events. If you are interested in a role, or would like to share your ideas, please contact Ms Rivers.

Exhibitions and Competitions

There will be opportunities to contribute to various exhibitions and enter art competitions this year. Your teacher will pass on information about these. Keep an eye on our notice board for events and opportunities.

One Day Art Display

Your portfolio will be exhibited in our One Day Art Display. Please invite you family and friends!

Exhibition: **Tuesday 29 October, 8.00am-4.00pm**

BELONG!

The Art Department is a hive of activity. It is a fun and friendly place with high expectations where students are encouraged to maximise every moment in class. We establish a sense of whānau, with a culture where students support each other to deepen understanding as a community of learners. It is important to Visual Arts staff, that your strengths and challenges are known and that successes are celebrated. If you have a particular area of expertise, we encourage you to show leadership and pass on your knowledge to others.

Nau te rourou, naku te rourou, ka ora te manuhiri

With your food basket and my food basket, the people will thrive

This whakatauki is about the opportunity to come together, share ideas and form meaningful relationships with others to enable all to flourish.